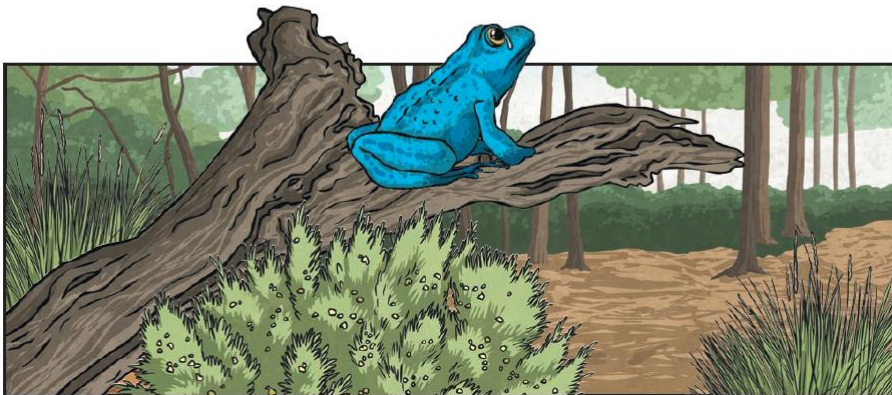


Gary's Big Adventure

11 Gary knew that he needed to find a vantage – a place
22 which would give him a good view of the entire rainforest.
34 Without that, a tiny frog like him would never be able to
45 find them. But where could he go? He was surrounded by
54 acres of thick, dense vegetation. No cliffs. No waterfalls.
65 Suddenly, he had an idea. He stretched out his toes as
75 wide as they would go and jumped towards the nearest
84 tree trunk. Clinging on, he climbed higher and higher
94 until he finally reached the canopy. He stood atop the
101 wide-reaching fronds, looking towards the horizon in
111 search of two tiny, blue specks, which looked just like
122 him. Just as he had given up hope, an auburn orangutan
132 swung by, carrying two sticky, blue lumps on her back...



Quick Questions



1. Which two tall, natural features was Gary unable to go to?



2. 'Gary knew that he needed to find a vantage...' What do you think vantage means in this sentence?



3. Who do you think Gary is looking for? Use evidence from the text to support your answer.



4. What do you think Gary will do next?

Layers of the Rainforest

- 8 Tropical rainforests are made up of distinct layers.
- 19 The forest floor is very hot and humid and little grows
31 there. This part of the rainforest gets less than 2% of the
43 sun's light. It is covered in a thin layer of fallen leaves
47 which rot away quickly.
- 57 Next are the shrub layer and the understory – a dark
68 place, where lots of insects, frogs and snakes can be found
77 amongst the few plants which don't need much sunlight.
- 87 Above this is the canopy, where most trees stop growing
98 and where up to 90% of rainforest creatures can be found.
- 111 This sunny area, rich in fruit and seeds, can be as high as
116 thirty metres off the ground.
- 125 Finally, the few giant trees that thrust themselves above
134 the dense canopy layer are called the emergent layer.



Quick Questions



1. In which layer can most rainforest animals be found?



2. *'The few giant trees that thrust themselves above the dense canopy layer..'*
What do you think dense means in this sentence?



3. How is the forest floor different to the canopy?
Give two reasons.



4. Why don't animals live on the forest floor?

People of the Rainforest

10 We stumbled on them much by chance – spotting a young
21 girl, no older than four, through the clearing in the trees.
32 She merely wore a skirt made from reeds and leaves, and
43 a simple cloth headband to keep the hair from her eyes.
52 We watched as she toddled towards the river – unsteady
64 on her feet, but far steadier than we were. It was clear
70 that she knew this rainforest well.

82 In the river stood a man with a bow and arrow made
91 from forest vines. He stood, knee-high in the flowing
100 torrents, aiming towards the water as silently as a
110 cheetah stalking its prey. With no hesitation, he let the
120 arrow fly and, from beneath the water, he retrieved a
130 humongous tilapia. He passed it to the little girl, who
135 scurried away amongst the trees.



Quick Questions



1. What two things was the girl wearing?



2. *'He stood, knee-high in the flowing torrents...'*
What do you think torrents means in this sentence?



3. What do you think a 'tilapia' is? Give a reason for your answer.



4. How do you think the girl's clothing compares to that of the explorers?

The Ultimate Jungle Survival Guide

11 To survive in the jungle, one of the world's harshest and
19 most inhospitable places, your two priorities are clear:
29 water and shelter. Without these, you won't make it a
31 single night.

41 Deep within the jungle, sources of fresh water are hard
53 to come by. Keep an eye out for any fallen leaves which
62 have caught pools of rainwater and drink them straight
74 away. You need to drink around 10 litres of water a day
81 to stay alive in this raging heat.

91 Before darkness falls, build a shelter high up off the
99 ground to avoid tigers and other predators overnight.
108 Banana leaves make an excellent shelter from the rain
116 and vines will hold together your hammock whilst
118 you sleep.



Quick Questions



1. What are the two priorities of jungle survival?



2. Find and copy a phrase which the author uses to show that the jungle can be deadly.



3. Why do you think the guide advises to build a shelter 'before darkness falls'?



4. Sum up the key points of this text in 15 words or less.
