

Year 5/6 history Summer 2 Week 1

# The ups and downs of Mary Anning's life

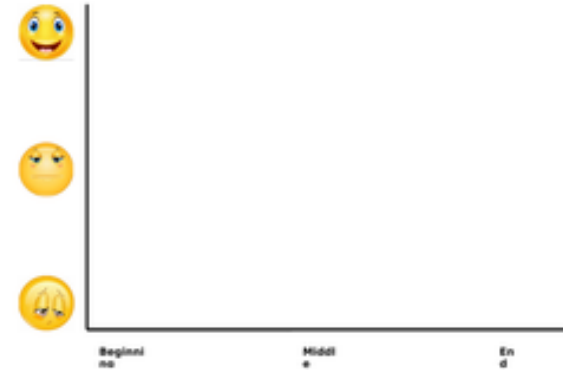
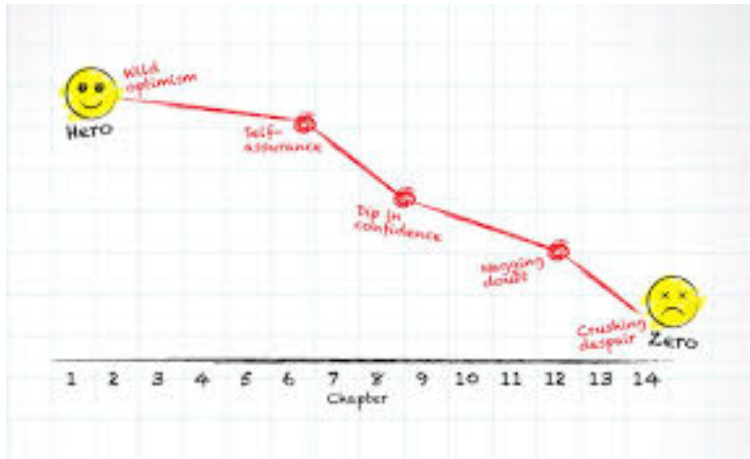
A living graph

Watch this video and also complete the tasks on BBC bitesize.

- [https://www.youtube.com/watch?v=qNOh-85\\_Dmc](https://www.youtube.com/watch?v=qNOh-85_Dmc)
- <https://www.bbc.co.uk/bitesize/topics/zd8fv9q/articles/zf6vb82>

# Task

Draw an emotions graph to show Mary's feelings during the different events in her life. These are some examples of emotion graphs we have looked at in the past.



Wednesday 24 January 2018

[cover lesson](#)

LE: To be able to use adjectives and verbs to make my sentences more interesting

Context: Exploring character's emotions

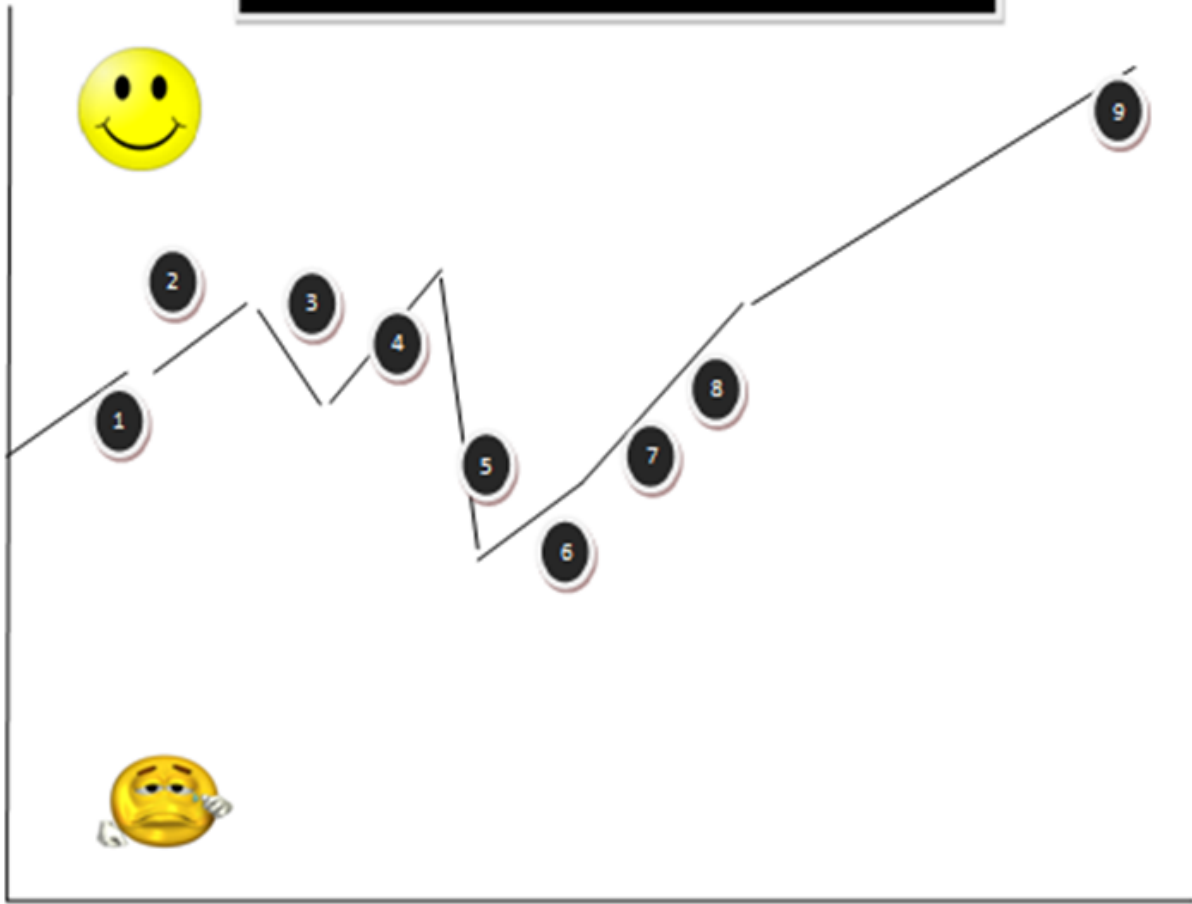
How did Jack feel throughout the story?



You could use this format on the squared paper provided.

The image shows a grid on a page. The vertical axis is on the left, and the horizontal axis is at the bottom, labeled with numbers 1 through 10. There are two yellow smiley face icons on the left side of the grid, one at the top and one at the bottom. Below the grid, there are 10 horizontal lines, each preceded by a number from 1 to 10.

# The Ups and Downs of Mary Anning's life



Mary was born

When Mary was 11

When Mary was 15

When Mary was grown-up

End of Mary's life

Example using the images.

The images on the following slides might help you. Think about the chronology of events.

F



G





B



A



D

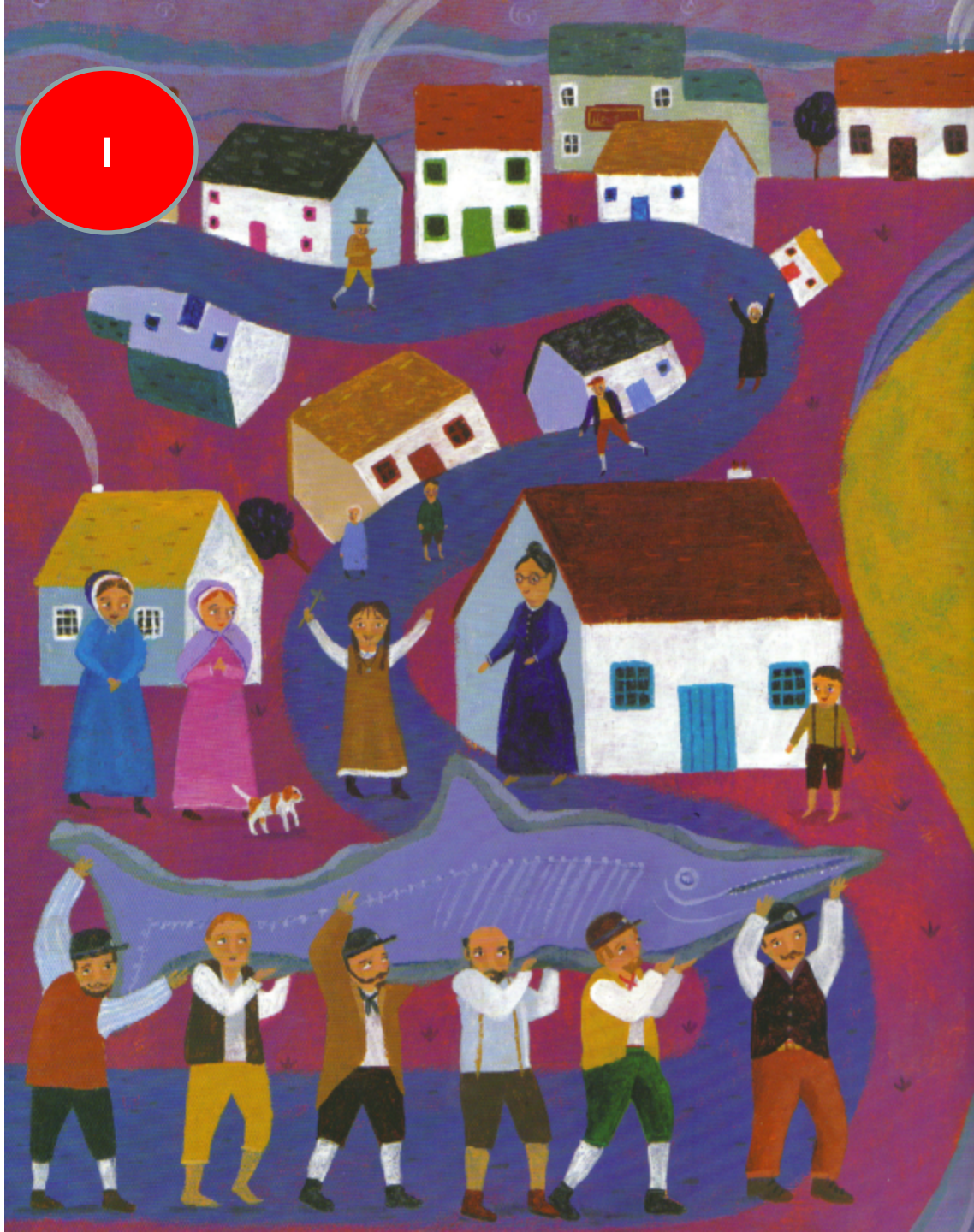


C



H

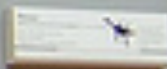




E



Mary Anning in  
the 18th century



# Credits

*Stone girl, Bone girl* by Laurence Anholt © Frances Lincoln

We grateful to Jessica Halliwell at Frances Lincoln for permission to use images from this book in the presentation