



Basic Animal Groups

Scientists estimate that there are 8.7 million species of animal on Earth.

There are 6 groups of animals on Earth:

Birds

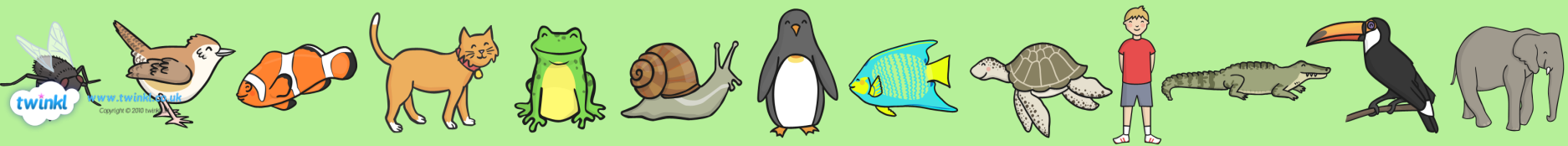
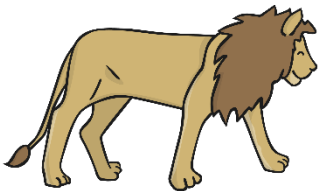
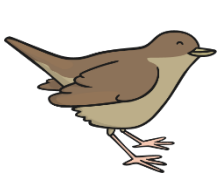
Mammals

Fish

Amphibians

Reptiles

Invertebrate

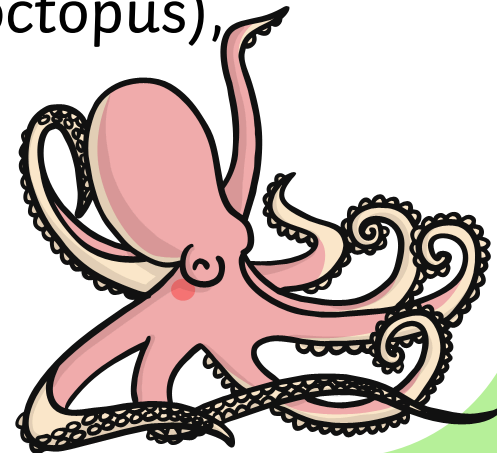
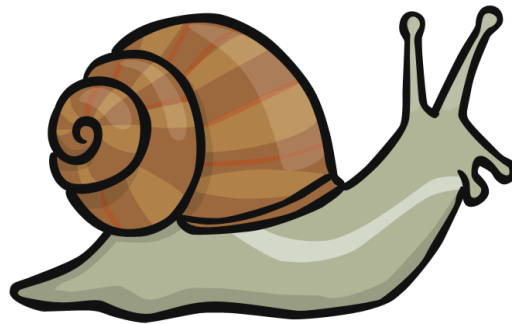
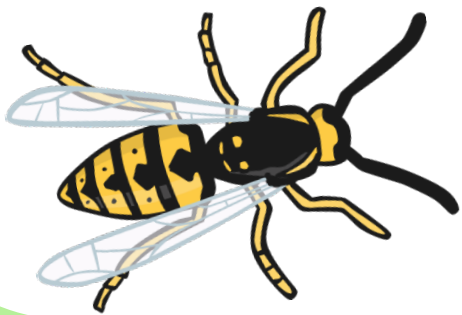




Invertebrates



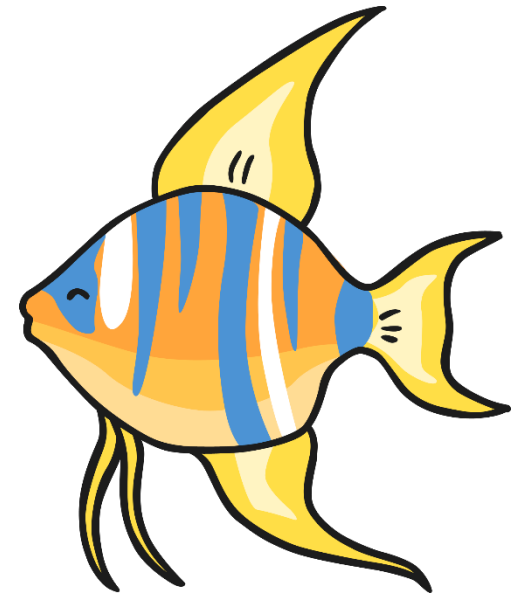
- The first animals to evolve. 600 million years ago!
- 97% of all species alive today are invertebrates.
- Invertebrates do not have a backbone.
- Invertebrates include animal groups such as insects, sponges, flatworms, molluscs (squid and octopus), arthropods and many others.





Fish

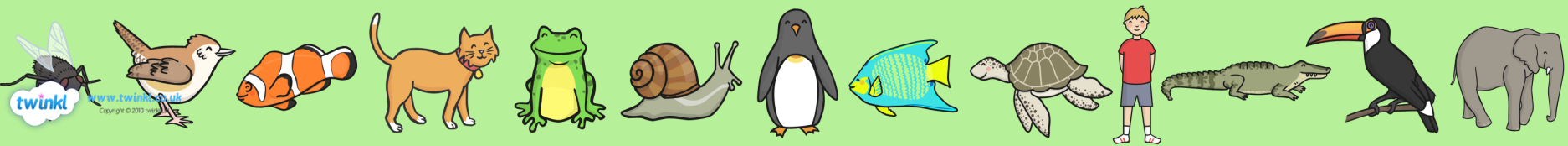
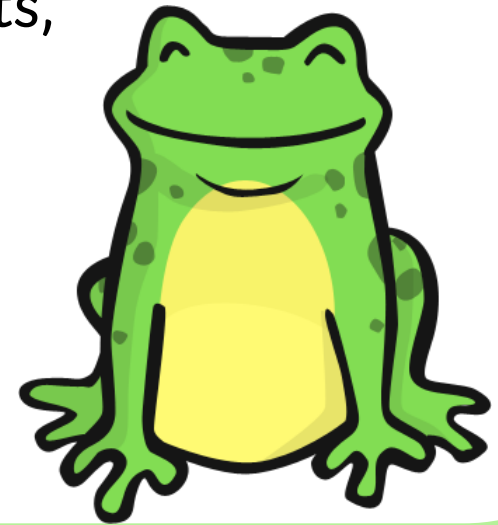
- The first vertebrates (animals with a backbone) to evolve.
- Fish live in water.
- They have skin covered with scales.
- They have two sets of paired fins.
- They have a set of gills.

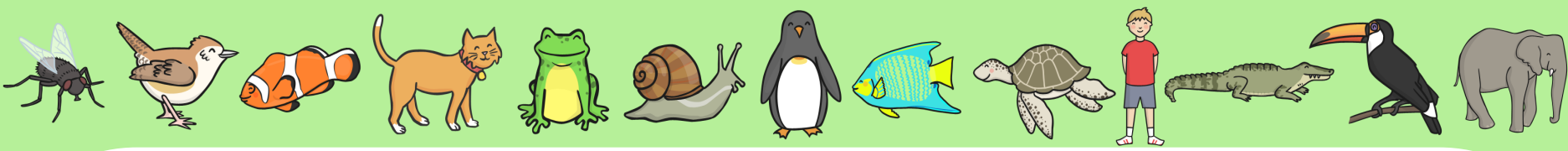




Amphibians

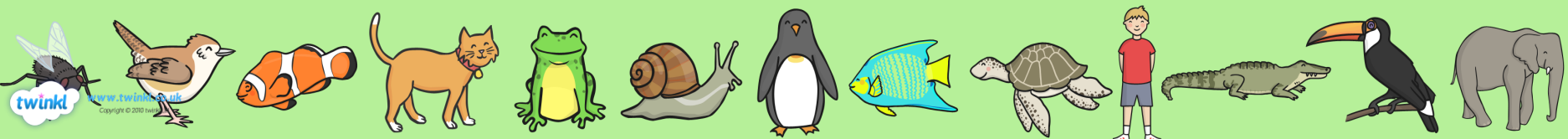
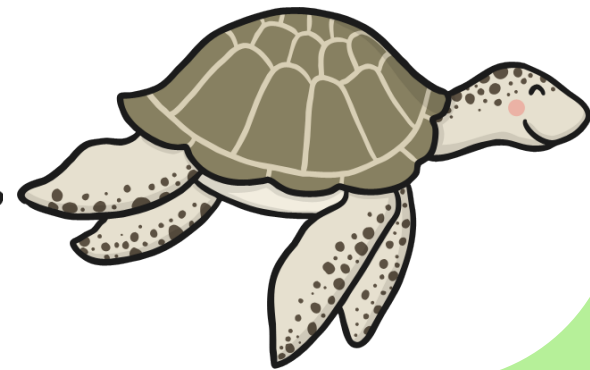
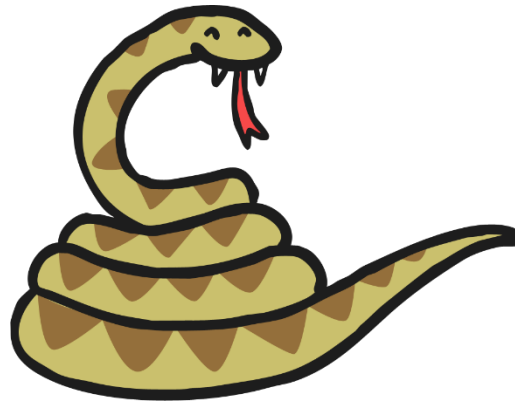
- Amphibians were the first vertebrates to make the move from life in water to life on land.
- They live on land but they tend to go in water a lot.
- Amphibians include frogs, toads, newts, salamanders and caecilians.





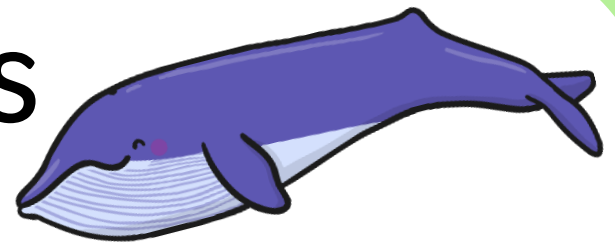
Reptiles

- Cold blooded vertebrates that evolved from amphibians over 300 million years ago.
- They have scales.
- They lay eggs with hard shells.
- Reptiles include turtles, crocodiles, lizards, snakes and tuataras.

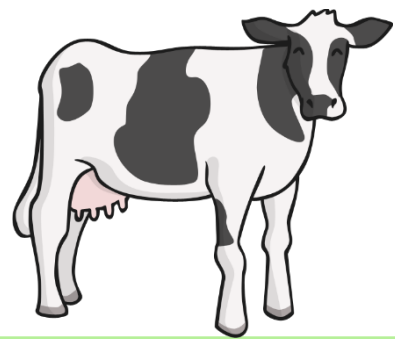
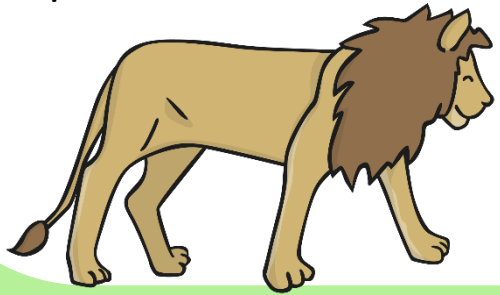




Mammals



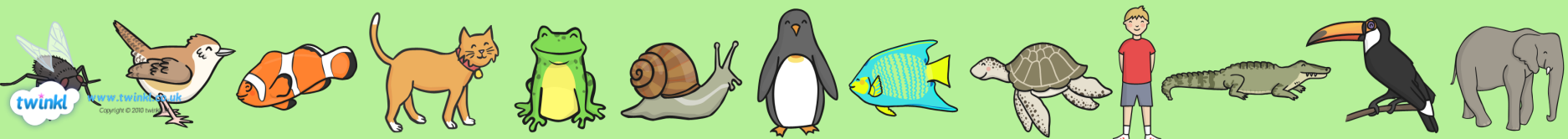
- Evolved from reptiles 200 million years ago.
- Mammals survived the ice age 65 million years ago which killed the dinosaurs. They then began to spread across every continent in the globe.
- Mammals are able to live almost anywhere because they are very varied.
- The smallest mammal is the bumblebee bat, the largest is the blue whale.
- Mammals include carnivores, rodents, elephants, marsupials, rabbits, bats, primates, seals, and many more.





Basic Mammal Groups

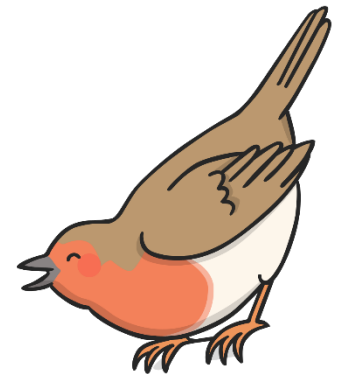
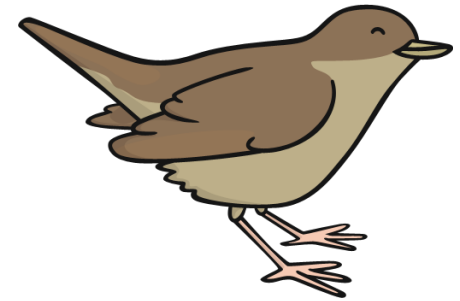
Aardvark	A burrowing nocturnal mammal which has a long snout and eats ants and termites. They live in Africa.
Anteaters and relatives	Anteaters are a group of mammals which include anteaters, armadillos and sloths. They have very strong backs so they can dig and burrow.
Bats	The only mammals with wings.
Carnivores	Feliforms – hyenas, cats, mongooses. Carniforms- dogs, wolves, foxes, bears, raccoons, red pandas.
Cetaceans	Marine mammals -dolphins and whales.
Colugos	Flying lemurs.
Elephant Shrews	12 different species of elephant shrew.
Elephants	African and Asian elephants.
Lagomorphs	Hares, rabbits and pikas.
Hoofed mammals – Odd toed	Pigs, camels, giraffe, cattle, deer, antelope.
Hoofed mammals – Even toed	Horses, rhinoceroses and tapirs.
Hyraxes	Species of hyrax.
Insectivores	Hedgehogs, moonrats, shrews and voles.
Marsupials	Animals with a pouch, koala, kangaroo, wombat etc.
Monotremes	Mammals that lay eggs like the platypus.
Pangolins	Species of pangolin.
Primates	Monkeys, apes, bush babies.
Rodents	Mice, rats, squirrels, gerbils and other rodents.





Birds

- Birds evolved from reptiles 150 million years ago.
- Birds have feathers.
- Birds have a bill.
- Birds have a furcula (wish bone).
- Most birds can fly.
- Ostriches, kiwis and penguins lost their ability to fly as their lifestyles were more suited to land or water.





Which animal group do I come from?

invertebrates

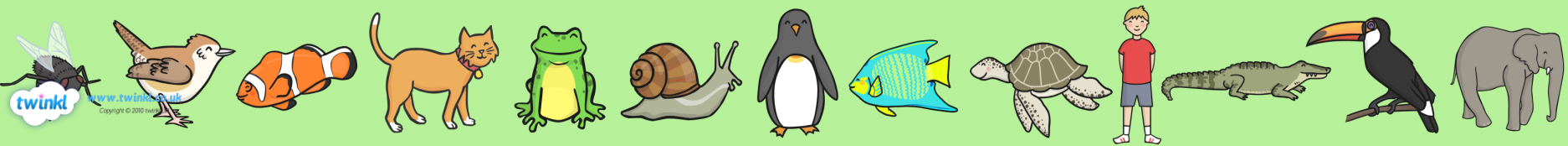
fish

amphibians

reptiles

mammals

birds





Which animal group do I come from?

invertebrates

fish

amphibians

reptiles

mammals

birds





Which animal group do I come from?

invertebrates

fish

amphibians

reptiles

mammals

birds





Which animal group do I come from?

invertebrates

fish

amphibians

reptiles

mammals

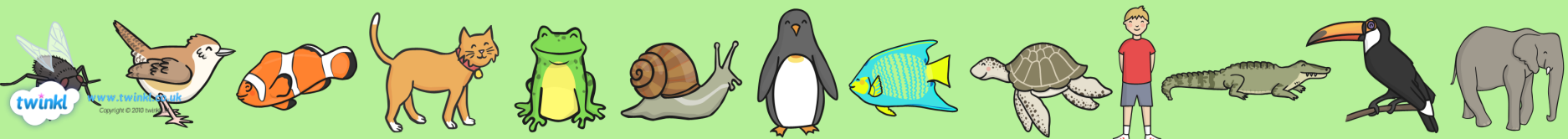
birds





Which animal group do I come from?

- invertebrates
- fish
- amphibians
- reptiles
- mammals
- birds





Which animal group do I come from?

invertebrates

fish

amphibians

reptiles

mammals

birds





Which animal group do I come from?

invertebrates

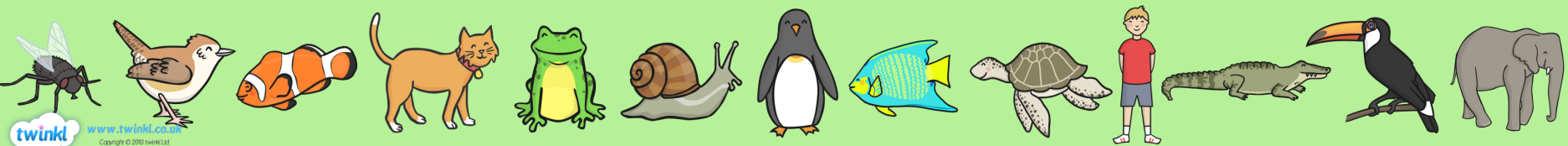
fish

amphibians

reptiles

mammals

birds





Which animal group do I come from?

invertebrates

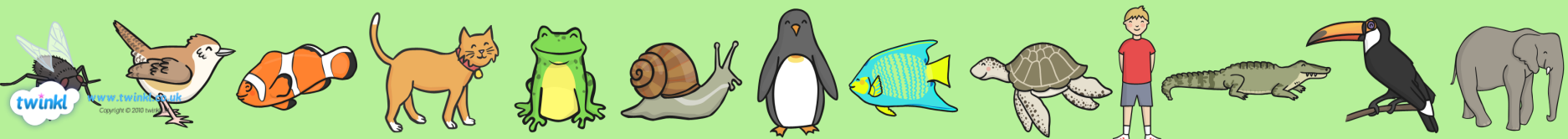
fish

amphibians

reptiles

mammals

birds





Which animal group do I come from?

invertebrates

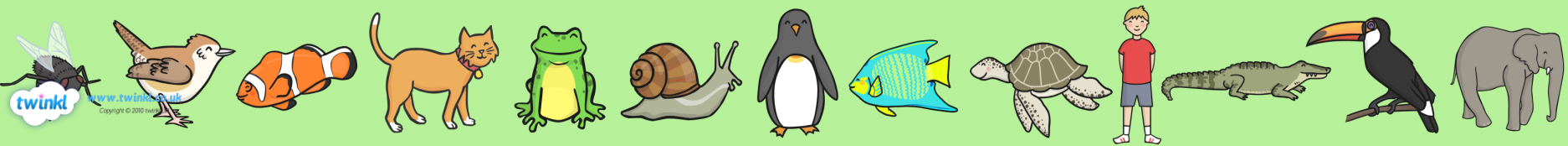
fish

amphibians

reptiles

mammals

birds





Which animal group do I come from?

invertebrates

fish

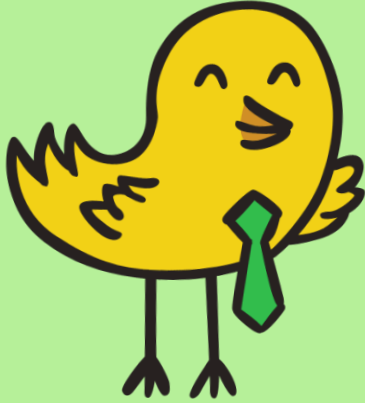
amphibians

reptiles

mammals

birds





THE END

